

AY fittings Aluminium Closed Mast Cleat - 2 Hole



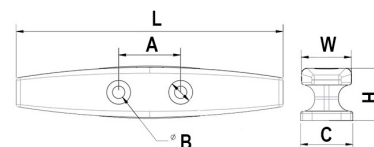
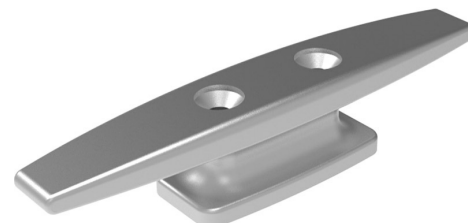
Aluminium Closed Mast Cleat - 2 Hole

Available in a variety of styles and fixing designs.
Suitable for large dinghies and yachts.

Allen Aluminium Yacht Fittings - A range of CNC milled fittings in Aluminium.
The majority of designs in this range are based on our old YS Fittings range which were cast rather than milled.

The milling process allows us to produce a precision engineered, consistently accurate product, resulting in a higher quality finish and a more easily fitted piece of hardware.

Hard silver anodised as standard - black finish available on request.



Part	Description	Length (L) mm	Width (W) mm	Fixing Hole Centre (A) mm	Fixing Hole Ø (B) mm	Feet Width (C) mm	Height (H) mm
AY-7107-B	Mast cleat - 2 hole	112	21	26	5.2	22	22
AY-7107-C	Mast cleat - 2 hole	156	28	30	6.2	30	28
AY-7107-E	Mast cleat - 2 hole	200	30	35	6.2	32	34
AY-7107-F	Mast cleat - 2 hole	255	38	45	10.2	40	42